

HIGH PRESSURE FILTER

AP 420 SERIES

TECHNICAL DATA

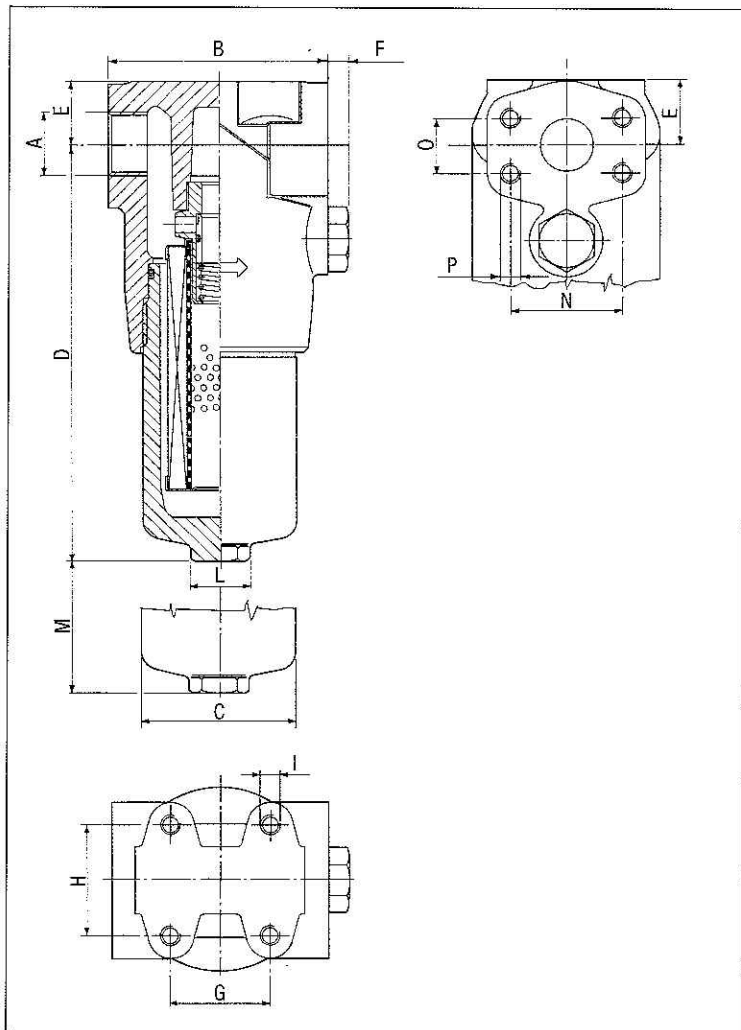
- 구상체의 CAST IRON의 FILTER HEAD CASTING
- COLD EXTRUDED STEEL BOWL
- 작동압력 : 42MPa(420Kgf/cm²)
- 정압 테스트 : 63MPa(630Kgf/cm²)
- NFPA T2.6, 151.에 의한 0-30MPa(0-300Kgf/cm²)에서 2,000,000 CYCLES의 피로 압력 테스트
- 바이패스 밸브 설정압 : 600kPa(6Kgf/cm²)-ISO3968
- 유체가 한 방향으로 ELEMENT를 통과하도록 허용되나 유체가 역으로 흐를 때 ELEMENT를 바이패스하는 REVERSE FLOW 밸브 가능. 별도 요청에 의해 가능
- 사용온도 : -20℃ ~ +120℃
- ISO 2943에 의한 유압작동유 사용
- ISO 3968에 의한 유량 및 차압 테스트 40℃, 밀도 0.875Kg/dm³에서 오일 운동 점도 30cSt
- ISO 228/1에 의한 THREADED PORTS 또는 SAE J 518-6000 PSI에 의한 FLANGED PORTS
- INDICATOR용 TAP 설치

FILTER ELEMENT

- 5-10-25μm ABSOLUTE, FILTRATION RATING SYNTAQ SYNTHETIC MEDIA
- ISO 4572에 의한 MULTIP/ass-TEST의 FILTRATION 효율
- ISO 2941에 의한 파손 저항 : 2MPa(20Kgf/cm²) (또한 요청에 의해 21MPa(210Kgf/cm²)에서 공급 가능)
- ISO 3723에 의한 END LOAD RATING
- ISO 3724에 의한 유량 피로 특성
- ISO 2942에 의한 구조물 보호

SYNTAQ®=SYNTHETIC MEDIA								
/03			/02			/01		
25 MICRON ABS.			10 MICRON ABS.			5 MICRON ABS.		
SIZE FLOW l/min	TYPE	ELEMENT	FLOW l/min	TYPE	ELEMENT	FLOW l/min	TYPE	ELEMENT
50	K030286 AP 361.03	P171733 AP 451.53	50	K030285 AP 361.02	P171732 AP 451.52	40	K030284 AP 361.01	P171731 AP 451.51
80	K030289 AP 362.03	P171736 AP 452.53	80	K030288 AP 362.02	P171735 AP 452.52	60	K030287 AP 362.01	P171734 AP 452.51
80	K030292 AP 362.08	P171736 AP 452.53	80	K030291 AP 362.07	P171735 AP 452.52	60	K030290 AP 362.06	P171734 AP 452.51
120	K030295 AP 363.03	P171739 AP 453.53	120	K030294 AP 363.02	P171738 AP 453.52	80	K030293 AP 363.01	P171737 AP 453.51
120	K030298 AP 363.08	P171739 AP 453.53	120	K030297 AP 363.07	P171738 AP 453.52	80	K030296 AP 363.06	P171737 AP 453.51
180	K040676 AP 364.03	P171742 AP 454.53	180	K040675 AP 364.02	P171741 AP 454.52	160	K040674 AP 364.01	P171740 AP 454.51
180	K040679 AP 364.08	P171742 AP 454.53	180	K040678 AP 364.07	P171741 AP 454.52	160	K040677 AP 364.06	P171740 AP 454.51
300	K040682 AP 365.03	P171745 AP 455.53	300	K040681 AP 365.02	P171744 AP 455.52	270	K040680 AP 365.01	P171743 AP 455.51
300	K040685 AP 365.08	P171745 AP 455.53	300	K040684 AP 365.07	P171744 AP 455.52	270	K040683 AP 365.06	P171743 AP 455.51
400	K040688 AP 366.03	P171748 AP 456.53	400	K040687 AP 366.02	P171747 AP 456.52	320	K040686 AP 366.01	P171746 AP 456.51
400	K040691 AP 366.08	P171748 AP 456.53	400	K040690 AP 366.07	P171747 AP 456.52	320	K040689 AP 366.06	P171746 AP 456.51

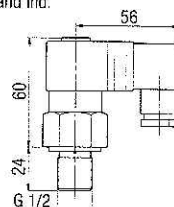
외형치수도



SERVICE INDICATORS

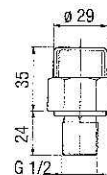
VISUAL ELECTRICAL DIFFERENTIAL PRESSURE INDICATOR

P171947 (507.03)
P171944 (507.06) with thermostat at min. temperature at 30° C
Setting: 500 kPa (5 bar)
Max. values: 250 ACV - 30 DCV - 5 A res. and ind.
Protection class: IP 65
Cable clamp: PG 11



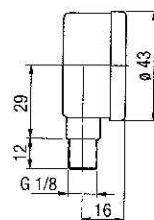
VISUAL DIFFERENTIAL PRESSURE INDICATOR

P171945 (506.06)
Setting: 500 kPa (5 bar)



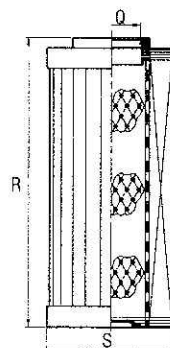
PRESSURE GAUGE

P171958 (500.01)
Scale: -100+500 kPa (-1+5 bar)



mm														
A	B	C	D	E	F	G	H	I	L	M	N	O	P	Kg.
G 1/2	110	78	172	33	9	50	57	M10	Hex30	50				6,1
G 3/4	110	78	207	33	9	50	57	M10	Hex30	50				6,7
3/4 SAE 6000	110	78	207	33	9	50	57	M10	Hex30	50	50,8	23,8	M10	6,8
G 1	110	78	312	33	9	50	57	M10	Hex30	50				8,2
1 SAE 6000	110	78	312	33	9	50	57	M10	Hex30	50	57,15	27,76	M12	8,4
G 1 1/4	140	105	256	46	9	94	57	M12	Hex30	55				14,8
1 1/4 SAE 6000	140	105	256	46	9	94	57	M12	Hex30	55	66,68	31,75	M14	15,1
G 1 1/2	140	105	356	46	9	94	57	M12	Hex30	55				17,2
1 1/2 SAE 6000	140	105	356	46	9	94	57	M12	Hex30	55	79,38	36,50	M16	17,2
G 1 1/2	140	105	496	46	9	94	57	M12	Hex30	55				20,1
1 1/2 SAE 6000	140	105	496	46	9	94	57	M12	Hex30	55	79,38	36,50	M16	20,1

mm		
Q	S	R
27	54	87
27	54	122
27	54	122
27	54	230
27	54	230
40	78	140
40	78	140
40	78	240
40	78	240
40	78	380
40	78	380



▣ 성능곡선

