

## SUCTION FILTER to be mounted below oil level

## FISBA 420 SERIES

### TECHNICAL DATA

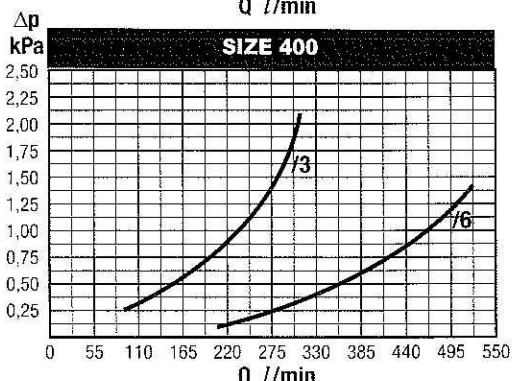
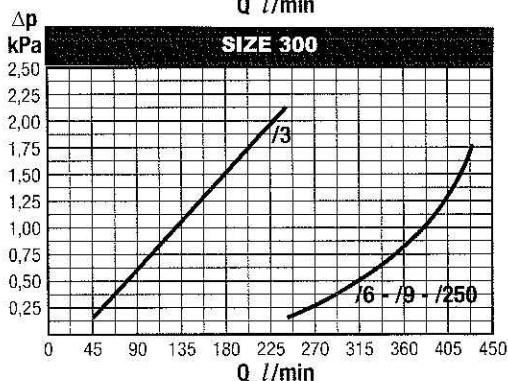
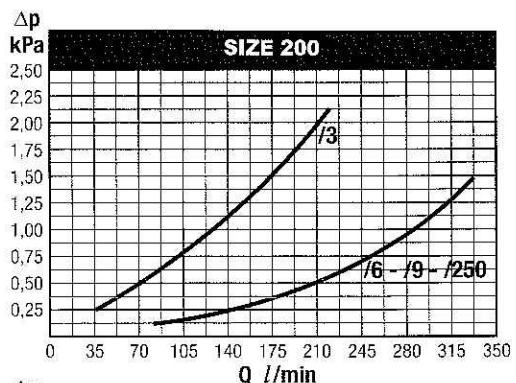
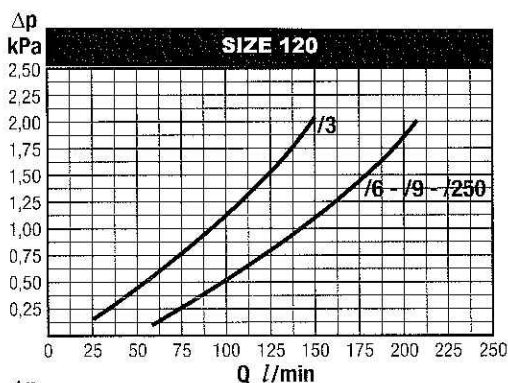
- 경합금 재질의 FILTER BODY와 COVER
- NO BY-PASS VALVE
- 최대작동압력 : 1000kPa(10Kgf/cm<sup>2</sup>)
- 정압 테스트 : 1500kPa(15Kgf/cm<sup>2</sup>)
- 유량 정지 DOUBLE 밸브, 오염된 소립자 제거를 위해 오일을 빼지 않고 ELEMENT 교체 가능
- 사용온도 : -20℃ ~ +120℃
- ISO 2943에 의한 유압작동유 사용
- ISO 3968에 의한 유량 및 차압 테스트 40℃, 밀도 0.875Kg/dm<sup>3</sup>에서 오일 운동 점도 30cSt
- SAE J 518-6000 PSI에 의한 FLANGED PORTS

### FILTER ELEMENT

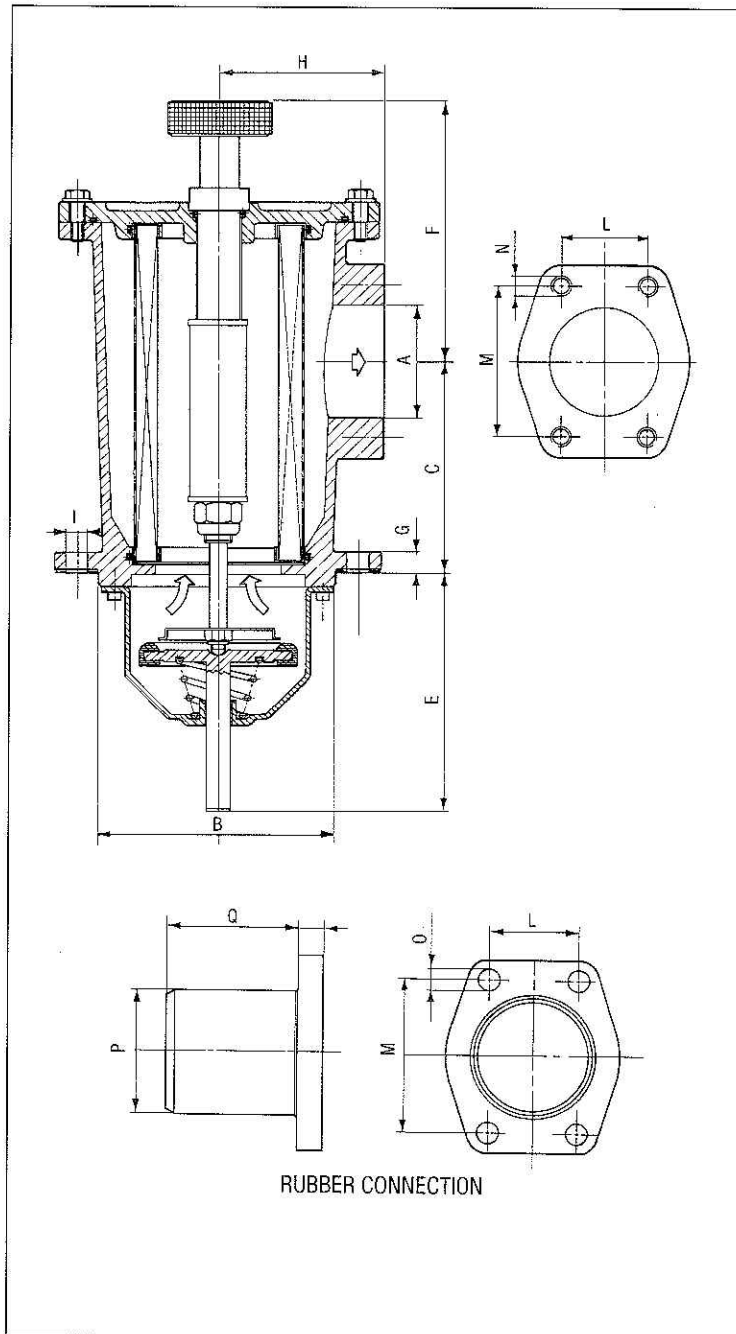
- WIRE MESH 30-60-90-250μm ABSOLUTE FILTRATION RATING
- ISO 2941에 의한 파손 저항 : 1000kPa(10Kgf/cm<sup>2</sup>)
- ISO 3723에 의한 END LOAD RATING
- ISO 3724에 의한 유량 피로 특성
- ISO 2942에 의한 ELEMENT 보호

SYNTEQ <sup>®</sup> -SYNTHETIC MEDIA											
/250			/9			/6			/3		
250 MICRON			90 MICRON			60 MICRON			30 MICRON		
SIZE FLOW l/min	TYPE	ELEMENT	FLOW l/min	TYPE	ELEMENT	FLOW l/min	TYPE	ELEMENT	FLOW l/min	TYPE	ELEMENT
120	K040673 FISBA 120/250	P171688 CF 120/250	120	K040670 FISBA 120	P171685 CF 120	120	K040672 FISBA 120/6	P171687 CF 120/6	80	K040671 FISBA 120/3	P171686 CF 120/3
200	K051193 FISBA 200/250	P171692 CF 200/250	200	K051190 FISBA 200	P171689 CF 200	200	K051192 FISBA 200/6	P171691 CF 200/6	120	K051191 FISBA 200/3	P171690 CF 200/3
300	K060184 FISBA 300/250	P171696 CF 300/250	300	K060181 FISBA 300	P171693 CF 300	300	K060183 FISBA 300/6	P171695 CF 300/6	200	K060182 FISBA 300/3	P171694 CF 300/3
400	K070247 FISBA 400/250	P171700 CF 400/250	400	K070244 FISBA 400	P171697 CF 400	400	K070246 FISBA 400/6	P171699 CF 400/6	250	K070245 FISBA 400/3	P171698 CF 400/3

### 성능곡선

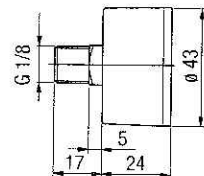


## 외형치수도

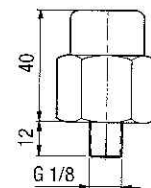


## SERVICE INDICATORS

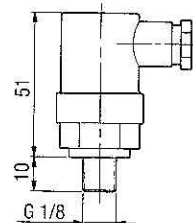
**VACUUM GAUGE**  
**P171954** (500.02)  
 Scale: -100+300 kPa (-1+3 bar)



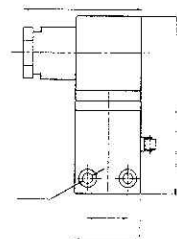
**VISUAL VACUUM GAUGE**  
**P171959** (503.02)  
 Setting: 30 kPa (0,3 bar)



**ELECTRICAL VACUUM GAUGE**  
**P171967** (504.02) N.O. contacts  
**P173105** (504.06) N.C. contacts  
 Setting: -30 kPa (-3 bar)  
 Max. values: 220 ACV - 30 DCV - 0,5 A res. - 0,2 A ind.  
 Protection class: IP 65  
 Cable clamp: PG 7



**OPENED VALVE INDICATOR**  
**P177432** (510.01)  
 Max. values: 220 ACV - 30 DCV - 0,5 A res. and ind.



## DIMENSIONS

mm																
A	B	C	D	E	F	G	H	I	L	M	N	O	P	Q	R	
2 SAE 3000	112	121	131	130	156	10	84	9	42,9	77,8	12	13	60	75	15	
2 1/2 SAE 3000	136	121	161	130	156	10	95	13	50,8	88,9	16	17	73	75	15	
3 SAE 3000	150	121	180	130	156	12	110	13	62	106,4	16	17	89	77	18	
4 SAE 3000	180	121	210	130	156	12	120	13	77,8	130	16	17	114	80	20	

## ELEMENT

mm			
S	T	U	
58	89	198	
65	99	198	
78	120	198	
93	136	198	